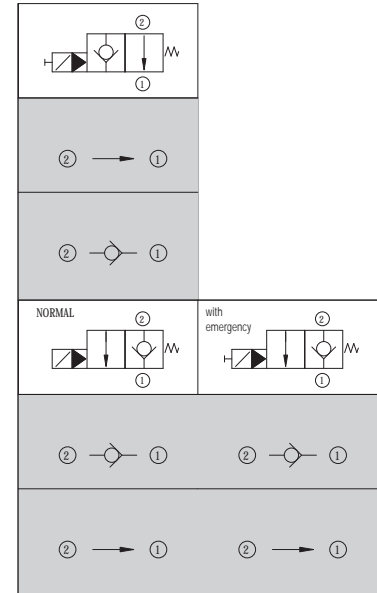


Two-way valve with electric drive

| Code | Description |
|--------------|--------------------------------------|
| | <i>Normally closed</i> |
| 562611L40A0A | Valve WS-08Z-01-C-N-12 DG |
| 562611L40A0C | Valve WS-08Z-01-C-N-12 DL |
| 562611L40A0D | Valve WS-08Z-01-C-N-24 DG |
| 562611L40A0B | Valve WS-08Z-01-C-N-24 DL |
| 562611L40E2D | Valve WS-08ZR-01M-C-N-12 DG |
| 562611L40E4D | Valve WS-08ZR-01M-C-N-12 DL |
| 562611L40E3D | Valve WS-08ZR-01M-C-N-24 DG |
| 562611L40E5D | Valve WS-08ZR-01M-C-N-24 DL |
| | <i>Normally open</i> |
| 562611M0137H | Valve WS-08Y-01-C-N-12-DG |
| 562611M0137F | Valve WS-08Y-01-C-N-12-DL |
| 562611M0137L | Valve WS-08Y-01-C-N-24-DG |
| 562611M0137G | Valve WS-08Y-01-C-N-24-DL |
| | <i>Normally closed double retain</i> |
| 562611M3137B | Valve WS-08W-01M-C-N-12 DG |
| 562611M3136A | Valve WS-08W-01M-C-N-12 DL |
| 562611M3137C | Valve WS-08W-01M-C-N-24 DG |
| 562611M3136B | Valve WS-08W-01M-C-N-24 DL |

Scheme



Coil

| Code | Description |
|--------------|------------------|
| 5626361120DG | Coil WS08 12V DG |
| 5626361120DL | Coil WS08 12V DL |
| 5626361240DG | Coil WS08 24V DG |
| 5626361240DL | Coil WS08 24V DL |

Coil drawings

