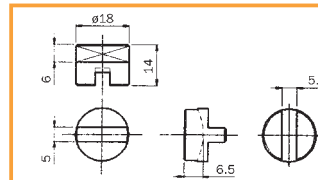
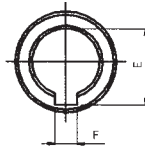
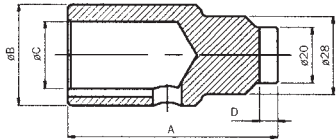
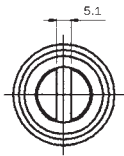


3 Coupling for A.C. electric motors 1 phase and 3 phase

Code	Motor / Motor	Motor		Dimensions (mm.)								
		2 P	4 P	Frame	1 phase	T3 phase	A	B	C	D	E	F
56241DE50K0T	PG0015	0,5	0,35	71	x	x	35	28	14	6	16.3	5D10
56241DE50K0T	PG0015	0,75	0,5		x	x	35	28	14	6	16.3	5D10
56241FF40K0T	PG0016	1	0,75	80	x	x	64	31	19	6.5	21.8	6D10
56241FF40K0T	PG0016	1,5	1		x	x	64	31	19	6.5	21.8	6D10
56241HG40K0T	PG0017	2	1,5	90	x	x	74	36	24	6.5	27.3	8D10
56241HG40K0T	PG0017	3	2		x	x	74	36	24	6.5	27.3	8D10
56241KH20K0T	PG0018	-	3	100	x	x	82	40	28	6.5	31.3	8D10
56241KH20K0T	PG0018	-	4		-	x	82	40	28	6.5	31.3	8D10
56241KH20K0T	PG0018	-	5,5	112	-	x	82	40	28	6.5	31.3	8D10
1201PG00330T	Pump Gr.1 X027.											
1201PG00600T	Pump Gr.0 -HP0,35											



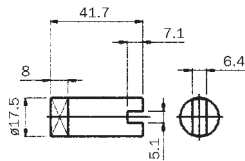
PG0033
PG0060

1201PG00330T
1201PG00600T

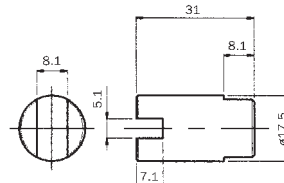
4 Coupling for D.C. electric motors

Code	Type	Characteristics	Volt	Watt	Diametr
563422B20EET	PG0003	D. 17,5 L=32 - Joint mod. O.S. D. 17,5 L=32	12	1600	114
563422B20EET	PG0003	D. 17,5 L=32 - Joint mod. O.S. D. 17,5 L=32	24	2200	114
56241DE50K0T	PG0015	Gr.1 HP3-5,5 - Joint side motor Gr.1 HP3-5,5	12-24	2500	125
56241DE40K0T	PG0016	Gr.1 HP0,75-1 - Joint side motor Gr.1 HP0,75-1	12-24	2500	150
1201PG00560T	PG0056	AMK-5513 Alt. pump - Joint for motor. AMK-5513 pump	24	3000	125
1201PG00570T	PG0057	PF0062 D.14,5 - Joint for flange PF0062 D.14,5	12-24	500	80
1201PG00590P	PG0059	0,5KW pump Gr.1	12-24	500	80

DIS. 1



DIS. 2



5 Independent drive systems

Code	Type	Characteristics
56242EP1000T	TI 98	Independent drive system without pulley
56242EP3000T	TI 99	Independent drive system with pulley
56242F01000T	TI 100	Pulley D = 100 mm.
56242F01250T	TI 125	Pulley D = 125 mm. (Dp 125 - 1)

