

## MCR Hydraulic Power Pack with an AC Motor



### Description

The MCR Hydraulic Power Pack offers the flexibility to perform numerous hydraulic functions within a compact design. With 0.18 to 5.5kW AC Motors the gear pump can produce pressures up to 310bar. Two types of central manifold house numerous pressure and flow control valves with manifolds for directional control valves.

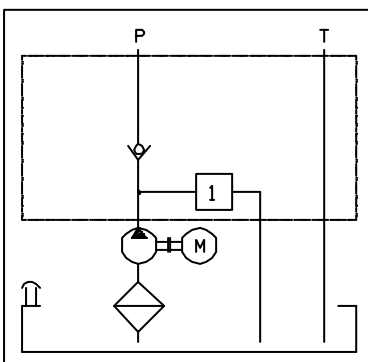
### Available Types

<b>DC Motor</b>	220/240V 1ph 50Hz 0.25 to 2.2kW 2pole and 4 pole	380/415 3ph 50/60Hz 0.25 to 5.5kW 2pole and 4pole																																			
<b>Gear Pump</b>	Group 0 with displacements of 0.16; 0.24; 0.45; 0.56; 0.75; 0.98; 1.27; 1.48; 2.28 cc/rev Group 1 with displacements of 0.85; 1.0; 1.2; 1.7; 2.2; 2.6; 3.2; 3.7; 4.3; 4.7; 6.0; 7.8; 7.9; 9.8 cc/rev																																				
<b>Reservoir Volumes (Litres)</b>	<b>Thermo-Plastic</b>	<b>Steel</b>																																			
	<table border="1"> <tr><td>5L</td><td>W H L</td><td>1,5L</td><td>? 123 x 150</td></tr> <tr><td>10L</td><td>130x140x295</td><td>2,5L</td><td>? 123 x 235</td></tr> <tr><td></td><td>130x140x635</td><td>5L</td><td>? 174 x 295</td></tr> <tr><td></td><td>Aluminium (vertical)</td><td>8L</td><td>? 174 x 419</td></tr> <tr><td></td><td>W H D</td><td>10L</td><td>? 224 x 262</td></tr> <tr><td>6L</td><td>280x206x200</td><td>12L</td><td>? 224 x 380</td></tr> <tr><td>10L</td><td>340x250x247</td><td></td><td></td></tr> <tr><td>16L</td><td>368x275x290</td><td></td><td></td></tr> <tr><td>25L</td><td>490x317x340</td><td></td><td></td></tr> </table>	5L	W H L	1,5L	? 123 x 150	10L	130x140x295	2,5L	? 123 x 235		130x140x635	5L	? 174 x 295		Aluminium (vertical)	8L	? 174 x 419		W H D	10L	? 224 x 262	6L	280x206x200	12L	? 224 x 380	10L	340x250x247			16L	368x275x290			25L	490x317x340		
5L	W H L	1,5L	? 123 x 150																																		
10L	130x140x295	2,5L	? 123 x 235																																		
	130x140x635	5L	? 174 x 295																																		
	Aluminium (vertical)	8L	? 174 x 419																																		
	W H D	10L	? 224 x 262																																		
6L	280x206x200	12L	? 224 x 380																																		
10L	340x250x247																																				
16L	368x275x290																																				
25L	490x317x340																																				
<b>Controls</b>	Integral Control Options are shown overleaf Directional control manifolds are available																																				

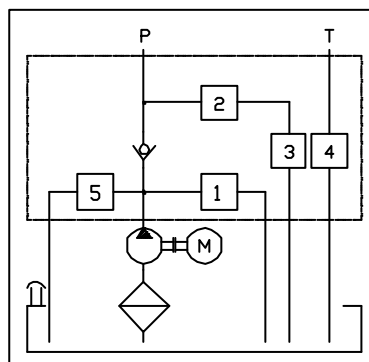
### Technical data

<b>Max Flow</b>	30 LPM
<b>Max Continuous Pressure</b>	250 bar
<b>Max Peak Pressure</b>	310 bar
<b>Ambient Temperature</b>	-15 to +50°C
<b>Oil Temperature</b>	-15 to +70°C
<b>IP Rating</b>	IP54 (others on request)
<b>Supply voltage</b>	1ph 220/ 240V 50Hz 3ph 380/415V 50 or 60Hz
<b>Recommended Oil</b>	Hydraulic Mineral Oil ISO 6743/4 DIN 51519 Viscosity ISO3448
<b>Permissible contamination</b>	17/14 ISO 4406 class
<b>Central Manifold Connection</b>	Pressure (1) = 1/4" BSP Return (2) = 1/4" BSP

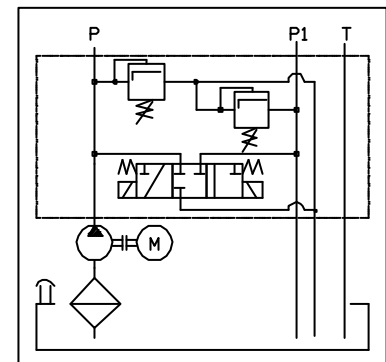
**Double Acting  
Central Manifold Type 'DA'**



**Single Acting  
Central Manifold Type 'SA'**



**Reversible System  
Central Manifold Type 'RE'**

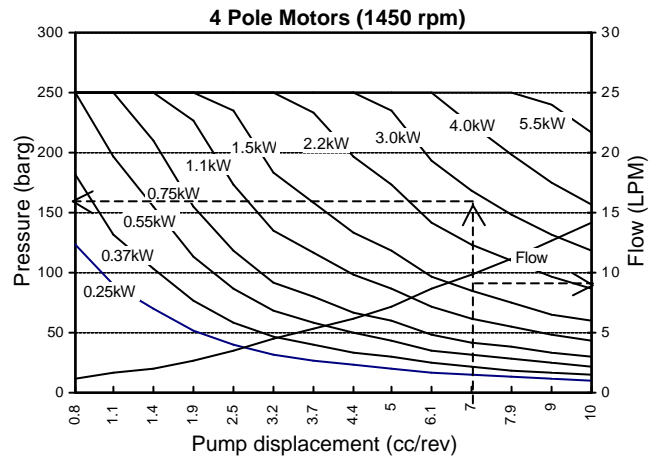
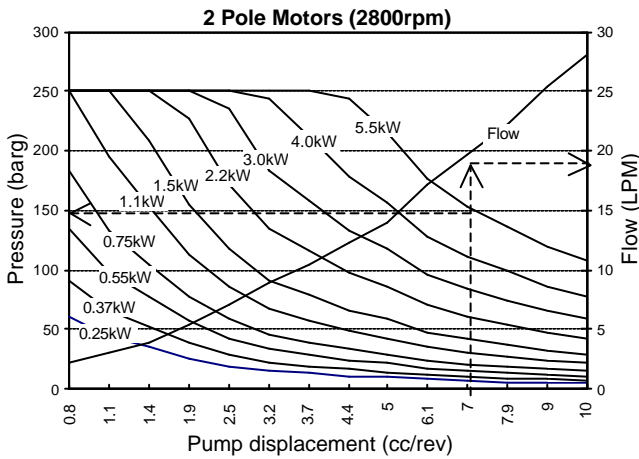


**Integral Control Options and Circuit locations (see Manifold Type 'SA', 'DA' and 'RE' overleaf)**

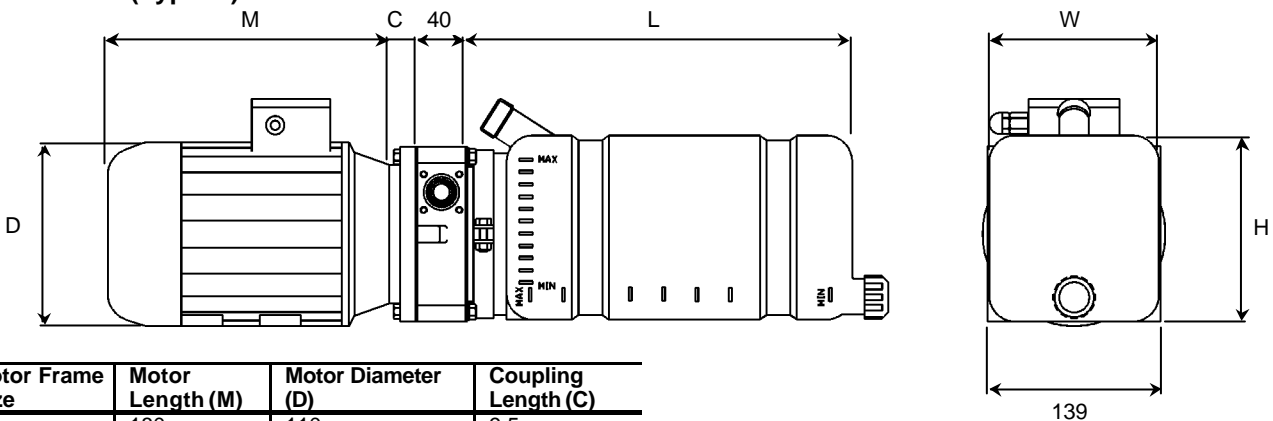
Relief valve (5-100)-(10-210)-(20-350)	Cavity No	Control Valves	Cavity No
Direct Acting Socket Adjust (VMP20)	1,2,5	Solenoid N.C Lowering valve	1,2,5
Direct Acting Knob Adjust (VMP20)	1,2,5	Solenoid N.C Lowering Valve with emergency	1,2,5
Direct Acting Sealed (VMP20)	1,2,5	Solenoid N.C Double seat Lowering Valve	1,2,5
<b>Pressure Compensated Flow Control Insert</b>	3	Manual Lowering with micro switch	1,2,5
Rating 2, 2.5, 4, 5, 6.5, 7.5, 9.5, 12, 16, 20 lpm		Manual Lowering without micro switch	1,2,5
<b>Cetop03 Manifolds</b>	3	Manual device with switch and safety lever	1,2,5
C3 Adaptor 1 Valve (C03B1)		Check valve	1,2,5
C3 Adaptor Multi stack (C03D)		1/4" Gauge/Pressure Port (P)	1,2,5
Distance block 30mm (C03DIS30)		Return Plug (R)	4
Distance block 50mm (C03DIS50)		1/4" Return Port (T)	1,2,5
POC Valve on A (C03NRA)		Externally adjusted flow control valve P and T	1,2,5
POC Valve on B (C03NRB)		Non-Compensated adjustable flow control	1,2,5
POC Valve on A&B (C03NRD)		Manual emergency Lowering valve	1,2,5
Relief Valve A-B (C03NRVA)		Single acting hand pump 2cc	2
Relief Valve B-A (C03NRVB)		Single acting hand pump 1cc	2
Relief Valve A-B & B-A (C03NRVD)		Direct Acting Relief	1,2,5

For further manifold mounted directional control options refer to the manufacturer.

**Performance Graphs**



**Dimensions (Typical) in millimetres**



Motor Frame Size	Motor Length (M)	Motor Diameter (D)	Coupling Length (C)
56	180	110	9.5
63	200	125	9.5
71	216	141	9.5
80	245	160	58
90S	268	178	58
90L	282	178	58
100/112S	310	195	58
100/112L	330	220	58

Dimensions W, H and L see Available Types overleaf.

Full installation drawings are available upon request.