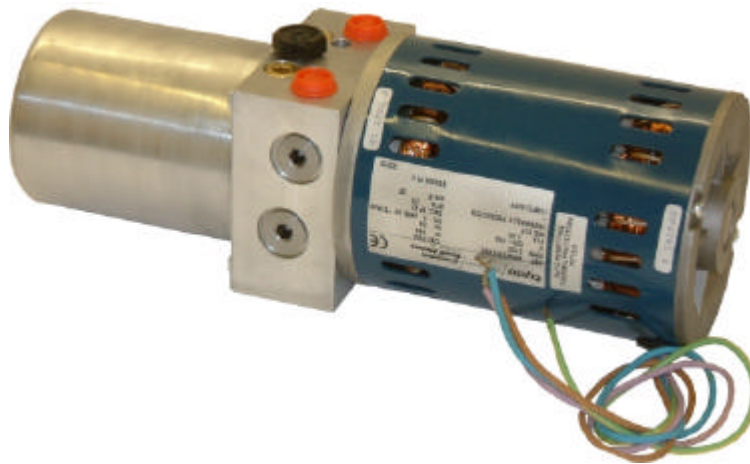


## HPR Reversible Hydraulic Power Pack



### Description

The HPR Reversible Hydraulic Power Pack offers the flexibility to operate double acting hydraulic functions within a very compact space and without the need for further control valves. With 150W to 800W DC Motors and 0.15 to 0.37kW AC Motors the gear pump can produce pressures up to 200bar. Dual Pilot Check Valves give leak free control for cylinders. Dual Relief valves give control in both directions whilst dual pilot suction check valves prevent induced pressures and noise when excess full bore cylinder flow returns to the tank.

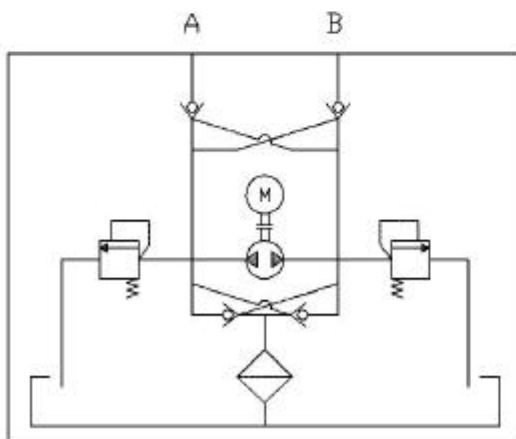
### Available Types

<b>DC Motor</b>	12V 150W, 250W, 500W, 800W	24V 150W, 250W, 500W, 800W
<b>AC Motor</b>	240v220/240V 1ph 50Hz 150W, 250W FHP and 0.18, 0.25 and 0.37kW 63 and 71 Frame IEC	
<b>Gear Pump</b>	Group 0 with displacements of 0.16; 0.24; 0.45; 0.56; 0.75; 0.98; 1.27; 1.48; 2.28 cc/rev	
<b>Reservoir Volumes (Litres)</b>	<b>Thermo-Plastic</b> Available on request	Aluminium (85dia) 0.1L 70 Long 0.2L 85 Long 0.5L 140 Long

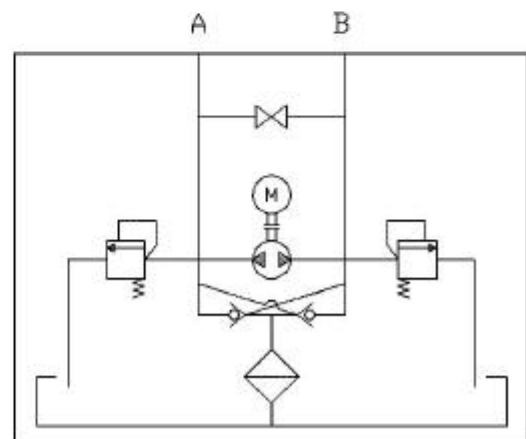
### Technical data

<b>Max Flow</b>	5 LPM
<b>Max Continuous Pressure</b>	200 bar
<b>Max Peak Pressure</b>	280 bar
<b>Ambient Temperature</b>	-15 to +50°C
<b>Oil Temperature</b>	-15 to +70°C
<b>IP Rating</b>	IP54 (others on request)
<b>Supply voltage</b>	1ph 220/ 240V 50Hz 12V and 24VDC
<b>Recommended Oil</b>	Hydraulic Mineral Oil ISO 6743/4 DIN 51519 Viscosity ISO3448
<b>Permissible contamination</b>	17/14 ISO 4406 class
<b>Central Manifold Connection</b>	Pressure (A and B) = 1/4" BSP Tank (T) = 1/4" BSP

**Double POC  
Central Manifold Type 'DPOC'**



**Manual override  
Central Manifold Type 'MO'**

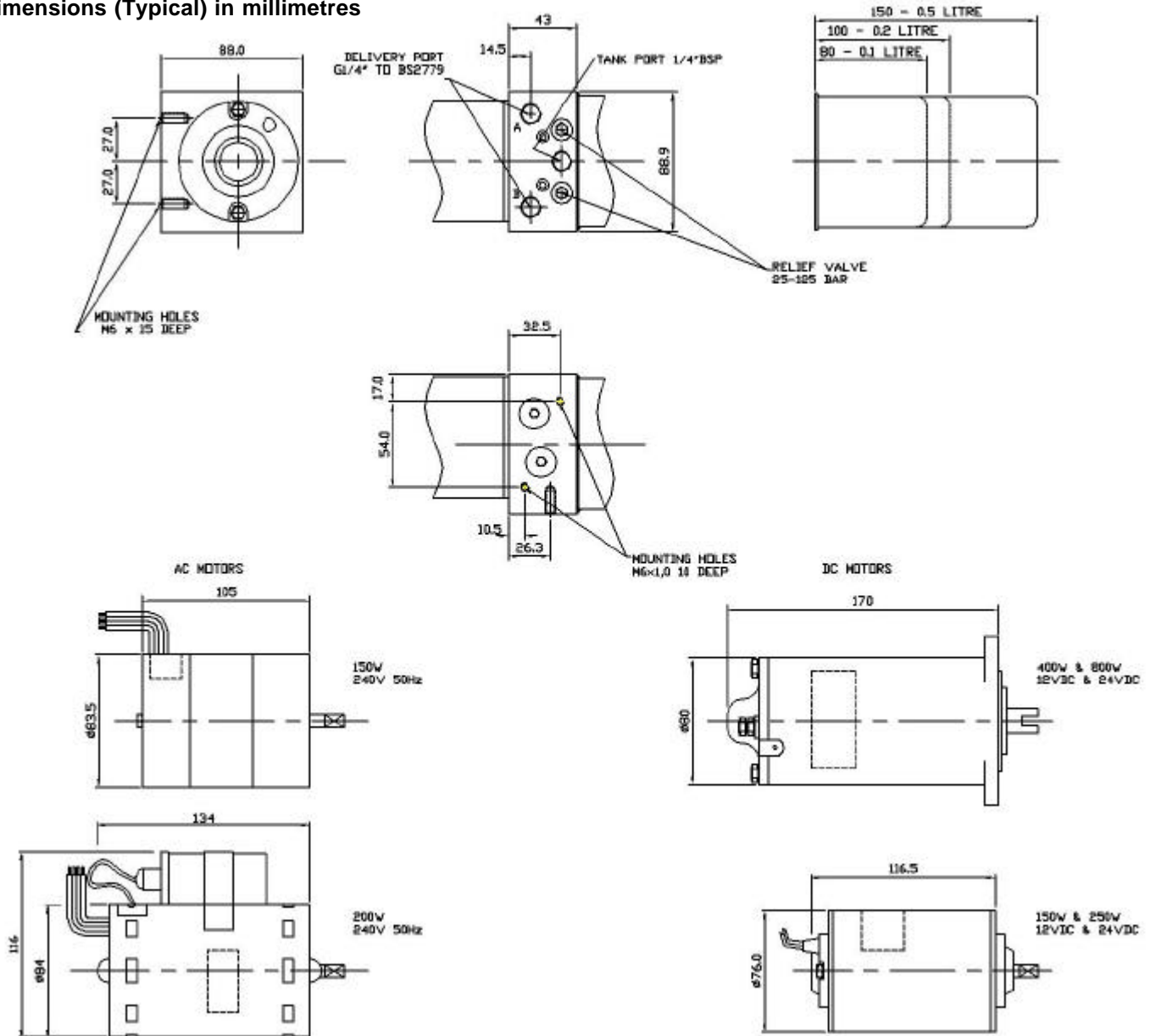


Note:- POC can be removed on A or B. For further manifold options refer to the manufacturer.

## Performance Graphs

See TI-100-01 for Motor Graphs and dimensions

## Dimensions (Typical) in millimetres



HPR 11 - 04 - H - PRNS - S01

MOTOR		
1		12 Volt
2		24 Volt
	1	150W
	2	250W
	5	500W
	8	800W
M	1	150W 240V AC

PUMP	
01	0.16cc/rev
02	0.24
04	0.45
05	0.56
07	0.75
10	0.98
12	1.27
15	1.48

MOUNTING	
H	Horizontal mounting
V	Vertical Mounting

CIRCUIT		
P		Pilot Check Valve
R		Relief Valve
	M	Manual Release
	S	Standard Body
N	N	Not Fitted

TANK		
B		Body Filler
E		End Filler
P		Pressurised Filler
S		No Filler
	01	0.1 Litre Steel
	02	0.2 Litre Steel
	05	0.5 Litre Steel