

## Solenoid Directional Control Valves – CETOP03 / NG6



### Description

The 4WE6 valve consists of a steel body, a control spool with two centering springs and operating solenoid coils. Two position valves consist of one coil and spring, three position valves utilise two coils and two springs. Solenoid coils are 12 & 24VDC, and 110V & 220VAC Coils which have built in rectifiers.

### Design

- Steel body
- 4/3, 4/2 and 3/2 way directional control
- Four-landed spools
- Wet pin core tubes
- Pressure to 320 bar
- Tank to 160 bar
- Flow rates to 60 litres/minute
- Push button manual override
- Installation to ISO 4401-03-02-0-94,  
DIN 240 340-A6
- Interchangeable AC and DC Coils
- Connectors with LED's

### Quality

- Phosphate coated housing
- Zinc plated coils
- CE Approved

## Ordering Code

4 WE 6 E 60 G24 N Z5L N

**Type**

4 = 4-port

**Design**

WE

**Size**

6=NG6 / CETOP03

**Spool type**

See chart

**Series**

60 = threaded coil retaining nut

**Spring**

Spring centre = blank (Standard)  
Spring return with Detent = OF  
Without spring return = /O

**Seal**

Viton = V  
Nitrile = blank

**Flow Insert**

No insert = blank  
0.8mm = B08  
1.0mm = B10  
1.2mm = B12

**Connector, DIN 43650**

Din Plug with LED = Z5L

**Manual Override**

Push button (Standard) = N  
No override = blank  
screw = S

**Coils**

12VDC = G12  
24VDC = G24  
24VAC = W24  
220VAC = W220  
110VAC = W110

## Spare Parts

Connectors – 3-pin to DIN 43650

| Voltage | Part Number                   |             |  |
|---------|-------------------------------|-------------|--|
|         | With LED (red)<br>as standard | Without LED | Moulded cable (2Metre)<br>With LED (red) |
| 12VDC   | 4WE12VDC                      | PIP9000BLK  | E453N2N20011A01                          |
| 24VDC   | 4WE24VACDC                    |             | E453N2N20011A02                          |
| 24VAC   | 4WE24VACDC                    |             | E453N2N20011A02                          |
| 110VAC  | 4WE110VAC                     |             | E453N2N20011A04                          |
| 220VAC  | 4WE220VAC                     |             | E453N2N20011A05                          |
|         |                               |             |  |

Coils – with DIN 43560 connections

| Voltage | Part Number |
|---------|-------------|
| 12VDC   | 4WE6G12VDC  |
| 24VDC   | 4WE6G24VDC  |
| 24VAC   | 4WE6W24VAC  |
| 110VAC  | 4WE6W110VAC |
| 220VAC  | 4WE6W220VAC |

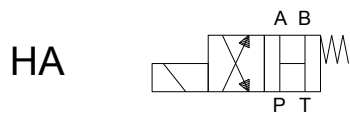
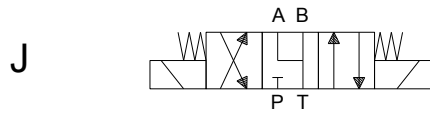
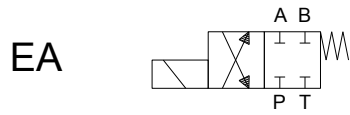
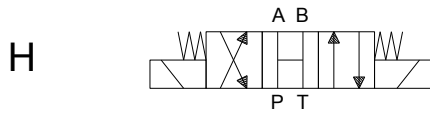
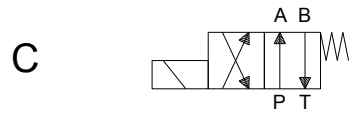
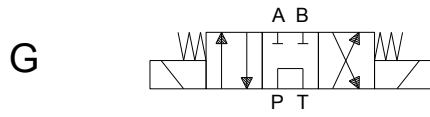
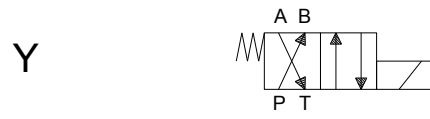
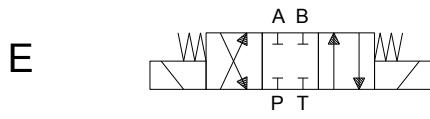
Validity of all specifications and order codes must be confirmed with Hydraproducts sales department

## Technical Data

|                                 |                    |  |
|---------------------------------|--------------------|--|
| Nominal Size                    | mm                 | 06 – NG6 / CETOP03   |
| Maximum Flow                    | l/min              | 60 – see p-Q graphs  |
| Max pressure A,B and P          | bar                | 320  |
| Max pressure T                  | bar                | 160  |
| Hydraulic fluid                 |                    | Hydraulic oil classes HM, HV to CETOP-RP 91H in viscosity class ISO VG32, 46 and 68. |
| Viscosity range                 | mm <sup>2</sup> /s | 20 to 400  |
| Fluid Cleanliness               |                    | Class 21/18/15 to ISO 4406 (1999)  |
| Oil Temperature – Nitrile seals | °C                 | -30 to +80   |
| Oil Temperature- Viton seals    | °C                 | -20 to +80   |
| Ambient Temperature, max        | °C                 | +50  |
| Max voltage Variation           | %                  | +/- 10   |
| Power Consumption               | W                  | 32   |
| Duty cycle                      | %                  | 100  |
| Service Life                    | cycles             | 10 <sup>6</sup>  |
| Weight                          | kg                 | 1.55 - Single Solenoid<br>2.10 - Double Solenoid                                     |

# Spool Types

---





## P-Q Graphs – Pressure Drop

|    | P-A | P-B | A-T | B-T | P-T |
|----|-----|-----|-----|-----|-----|
| E  | 2   | 2   | 3   | 3   |     |
| G  | 5   | 5   | 5   | 6   | 3   |
| H  | 2   | 2   | 2   | 3   | 3   |
| J  | 2   | 2   | 2   | 2   |     |
| Y  | 2   | 2   | 3   | 3   |     |
| D  | 2   | 2   | 3   | 3   |     |
| EA |     | 2   | 3   |     |     |
| EB | 2   | 2   | 3   | 3   |     |
| HB | 2   | 2   | 2   | 3   | 3   |
| HA |     | 2   | 3   |     |     |

