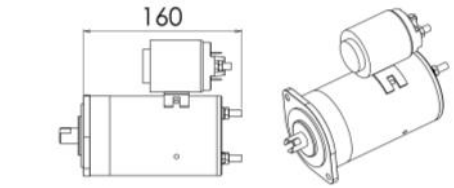


DC MOTORS

DC Motors— 0.5kW and 0.8kW

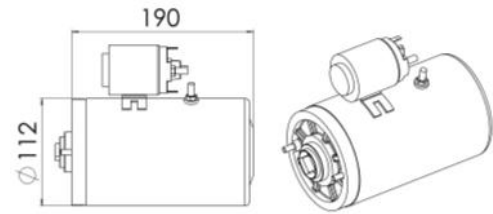
HP4143 12V 0.5kW	105
HP145 12V 0.8kW	108
HP4144 24V 0.5kW	205
HP4146 24V 0.8kW	208



for performance data see data sheet TI-100-03/04

DC Motors— 1.8kW and 2kW with start switch and thermal overload protection

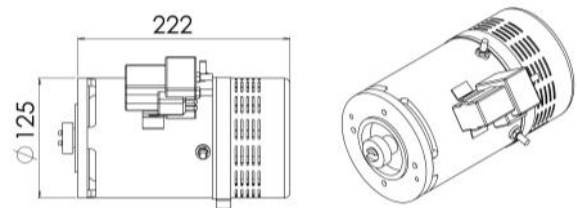
HP4421-12V 1.8kW	120
HP4421-24V 2kW	220



for performance data see data sheet TI-100-06

DC Motors — 3kW with start switch and thermal overload protection

EC3/2.4/35.15 + SW80	23F
----------------------	-----

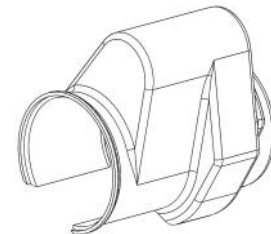


for performance data see data sheet TI-100-05

DC MOTOR ACCESSORIES

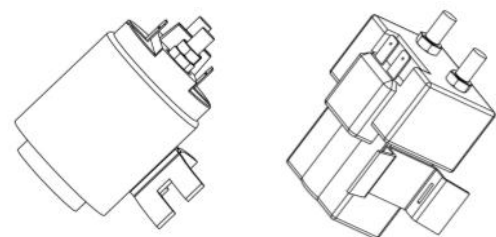
DC Motors— Protection Cover

UP9 Clip-on Motor cover



DC Motors— Start Switch

HP4454-12 12V 200Amp Start switch
HP4454-24 24V 150 Amp Start switch
SW80 24V 250 Amp Heavy Duty Start Switch



HPM

TD4

33W

H

S

C

N

05P

C

4567